



Doulton House, Chelsea Creek
Fulham SW6

GARTON JONES.COM



Doulton House, Chelsea Creek Fulham, SW6

GARTON JONES.COM

13 Park Street
Chelsea Creek
London
SW6 2FS

Sales +44 (0) 20 7824 7090
paul@gartonjones.com
www.gartonjones.com

£500,000 Leasehold

Manhattan-Style Apartment | Chelsea Creek

A beautifully presented Manhattan-style apartment offering 427 sqft (39.7 sqm) of well-planned living space, located on the 3rd floor of Doulton House, part of the prestigious Chelsea Creek dockside development.

The apartment is south-facing, overlooking the landscaped communal gardens, and is ideally suited as an investment opportunity or a London pied-à-terre. The accommodation comprises a spacious open-plan reception room with integrated kitchen, a well-defined sleeping area with fitted wardrobes, a luxury bathroom, wood flooring throughout, and excellent storage.

Residents benefit from a 24-hour concierge service and exclusive access to The Spa and Health & Fitness Suite, which includes an indoor swimming pool, sauna, steam room, gymnasium, and treatment room.

The fashionable King's Road and Chelsea Harbour, with their array of restaurants, bars, and boutiques, are within easy reach, while Imperial Wharf Station is just a short walk away.

An excellent opportunity to acquire a high-quality apartment in one of West London's most sought-after riverside developments.

Lease 999 from 2010
Service Charge £2150
Ground Rent £224

EPC — C (78)

Council Tax — London Borough Of Hammersmith & Fulham — Band D

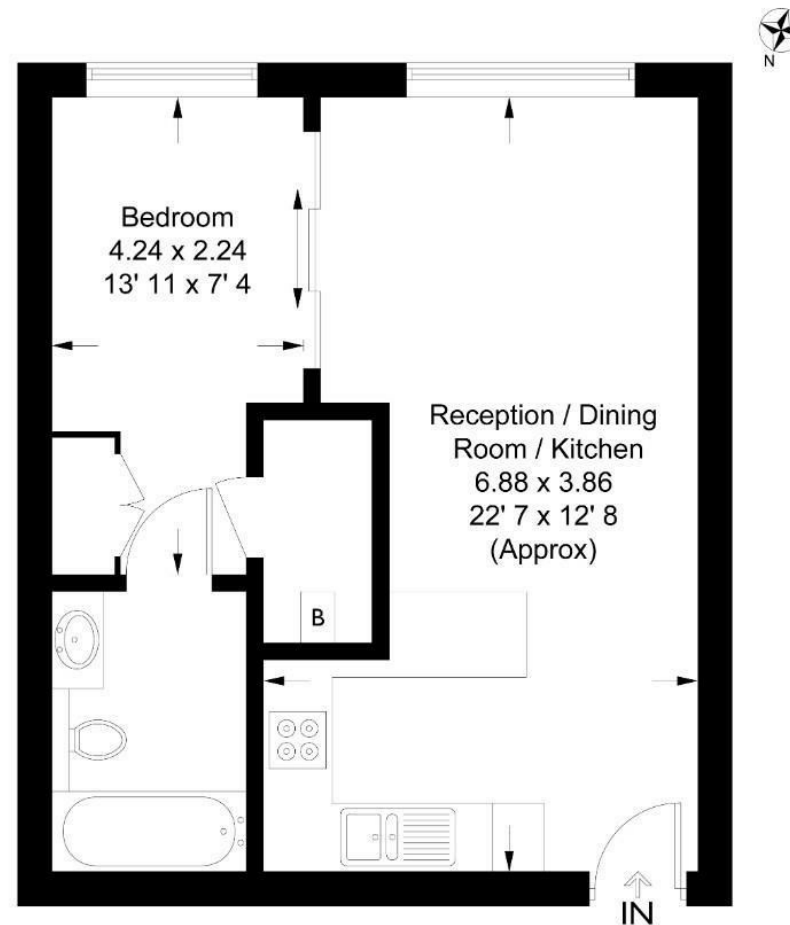


EPC certificate available on request.

Doulton House

Approximate Gross Internal Area = 427 sq ft / 39.7 sq m

GARTON JONES
LONDON



Third Floor

This plan is not to scale and must be used as layout guidance only. All measurements and areas are approximate and should not be relied upon to provide accurate information. This plan must not be relied upon when making property valuations, design considerations or any other such relevant decisions. We accept no responsibility or liability (whether in contract, tort or otherwise) in relation to any loss whatsoever arising from or in connection with any use of this plan or the adequacy, accuracy or completeness of it or any information within it.



